



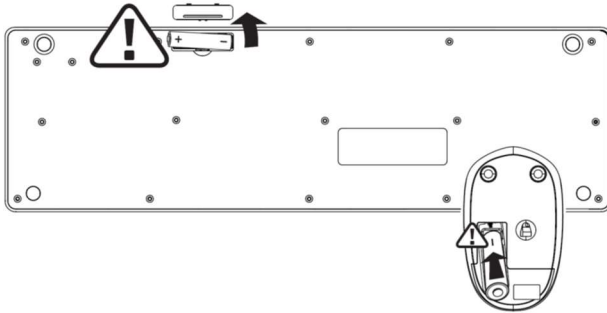
2.4G WIRELESS KEYBOARD & MOUSE COMBO

KAWSKBMSCBA

INSTALLATION

Step 1:

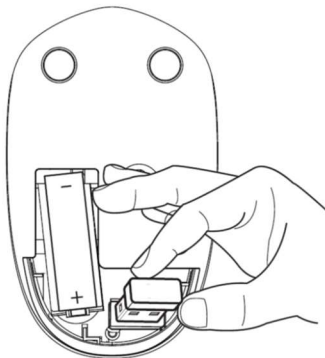
Open the battery case and turn the power switch to “ON”.



Insert the battery, ensuring to correctly align the positive and negative terminals.

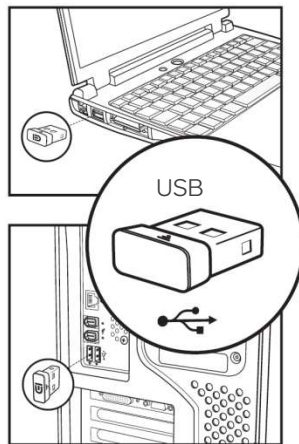
Step 2:

Remove the USB receiver from the mouse.



Step 3:

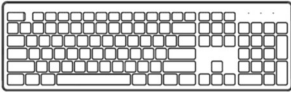


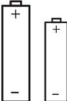

Insert the receiver into your computer's USB port.



Note:

It may take a few minutes for the mouse to be usable as required drivers may automatically install to facilitate usage.

IN THE BOX

				
1x Wireless keyboard	1x Wireless mouse	1x Nano receiver	2x AA alkaline battery	User Guide

TROUBLESHOOTING

1. Check the battery. If it is drained, replace it.
2. Disconnect and reconnect the USB dongle to establish a new connection.
3. Move to mouse closer to the receiver if it is out of the optimum range.

Reconnecting the USB dongle

1. Insert the battery and turn on the power
2. Press the left, middle, and right mouse buttons at the same time.
3. Let go of the buttons, then insert the dongle to the computer's USB port.
4. Place the mouse near the computer when the dongle is inserted.

SPECIFICATIONS

Mouse	
Mouse size	100x 60x 40mm
Mouse weight	50g
Functions	2 standard buttons and 1 scroll wheel
Sensitivity	1600dpi
Mouse return rate	250Hz
Mouse button life	~3 million presses
Transmission distance	≥20m
Power saving mode	Mode 1: ≈0.5±0.2mA Mode 2: 1min≈50μA Mode 3: 30min≈30μA
Keyboard	
Keyboard size	447.7 x 135.75 x 22.1mm
Keyboard weight	467g
Functions	104 keys + Multimedia keys
Keyboard key life	~10 million presses
Power saving mode	Mode 1: ≈1.5mA Mode 2: 1min≈50μA Mode 3: 30min≈20μA
System requirements	IBM or compatible computer Windows: 2000/ME/XP(x64)/Vista/7/8/10 Mac OS X V10.4 or later Usable USB port

Need more information?

We hope that this user guide has given you the assistance needed for a simple set-up. For the most up-to-date guide for your product, as well as any additional assistance you may require, head online to **help.kogan.com**

kogan